

# SAUNOVA 2.0



- ✓ PRACTICAL
- ✓ MODERN
- ✓ SIMPLE
- ✓ SMART HEAT CONTROLLING



## Saunova 2.0

### Sauna Heater Control

Saunova is a practical control for small heaters up to 9 kilowatts.

Saunova user interface can be placed inside or outside the sauna room! The system is with a smart controlling that alternately shuts down a heating element when the set temperature is reached. This process reduces temperature fluctuations that keeps heating elements to work at a balanced pace.

The design of Saunova is simple and modern that is very easy to use.



User interface holder is ordered separately.  
Available in Cedar, Aspen or Pine wood.



## Separate User Interface

- size: (W) 104 x (H) 147 x (D) 4mm
- weight: 0.37 kG
- 5 buttons
- 7 LED indicators
- Stainless metal casing
- Keypad lock

## Built-in Control

- User interface is together with Power Controller



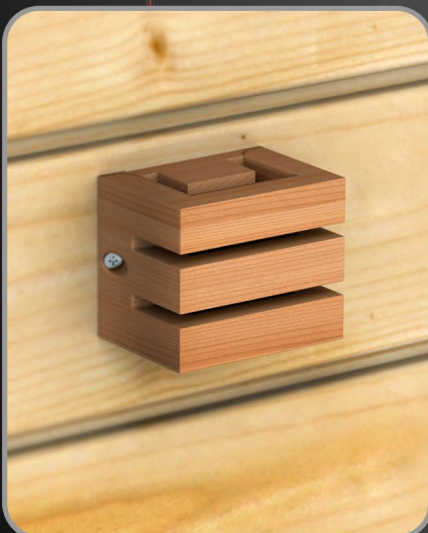
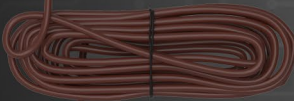
## Connector

- 6 poles / 4 poles
- RJ 12 - RJ 10 (Interface - Power Controller)
- RJ 10 - RJ 10 (Power Controller - Contactor)
- 4 meters length



## Power Controller

- size: (W) 265 x (H) 245 x (D) 75
- weight: 1,9 kG
- More than 9kW needs a Contactor
- Temperature setting
- Celsius / Fahrenheit unit of measure
- Session Time limiter for 1h, 2h, 4h, 6h, 8h, 12h, 18h, 24h
- Pre-run timer max 6h domestic use / 24h public use
- Light Control
- Steamer function with cabin drying (for Combi heaters only)
- Fan switch (optional)
- Heater safety switch (EN 60335-2-53) or door switch feature
- Remote On feature for household automation



## Sensors

- Together with 4m silicon wire
- Aspen or Cedar Wood cover
- Temperature Sensor (TS1)
- Temperature Sensor 2 for bench (TS2) - optional
- Temperature & Humidity Sensor for bench (T/H) - optional