

Thank you STP, **Welcome STN**

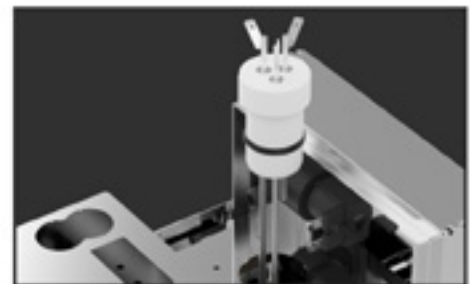
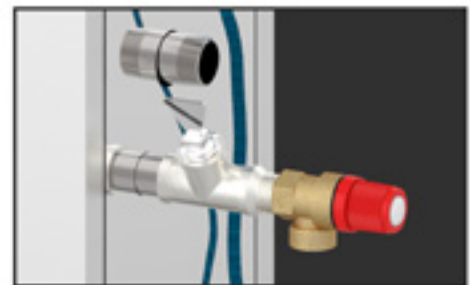


SAWO announces discontinuation of STP steam generators to give way to a NEW and improved model - STN.



What is new?

- ✓ Design and size
- ✓ Bigger steam outlet (3/4")
- ✓ Overpressure valve with pipe
- ✓ Easy water level probe maintenance
- ✓ Reversible mounting



Unleash steam generators of the future!



Replacement of STP



STN Steam Generator

A revolutionary steam generator is now here to serve the most demanding commercial and residential users. With five STN steam generators connected together and controlled with one single control panel, it is possible to reach power output up to 75 kW. STN is packed with convenient features and innovative solutions to experience enjoyable steam bath and hassle-free maintenance.

STN is built from high-quality stainless steel to ensure durability in heavy use and to give simple and timeless design for this high-performing steam generator.

Take your steam bath to the new level with SAWO STN steam generator.





2 HE

3 HE

6 HE

Technical DATA

2 Heating Elements

MODEL	kW	STEAM ROOM		WIDTH	SIZE DEPTH (mm)	HEIGHT	WEIGHT (kg)	CONTROL
		MIN (m³)	MAX					
STN-30-1/2	3,0	2	3	560	185	485	18,5	Touch / Classic / Classic 2.0
STN-35-1/2	3,5	2	3,5	560	185	485	18,5	Touch / Classic / Classic 2.0
STN-40-1/2	4,0	2	4	560	185	485	18,5	Touch / Classic / Classic 2.0
STN-45-1/2	4,5	2	5	560	185	485	18,5	Touch / Classic / Classic 2.0
STN-50-1/2	5,0	2	6	560	185	485	18,5	Touch / Classic / Classic 2.0

3 Heating Elements

MODEL	kW	STEAM ROOM		WIDTH	SIZE DEPTH (mm)	HEIGHT	WEIGHT (kg)	CONTROL
		MIN (m³)	MAX					
STN-45-3	4,5	2	5	560	220	485	20,5	Touch / Classic / Classic 2.0
STN-45-C1/3	4,5	2	5	560	220	485	20,5	Touch / Classic / Classic 2.0
STN-60-3	6,0	3	10	560	220	485	20,5	Touch / Classic / Classic 2.0
STN-60-C1/3	6,0	3	10	560	220	485	20,5	Touch / Classic / Classic 2.0
STN-75-3	7,5	4	15	560	220	485	20,5	Touch / Classic / Classic 2.0
STN-75-C1/3	7,5	4	15	560	220	485	20,5	Touch / Classic / Classic 2.0

6 Heating Elements

MODEL	kW	STEAM ROOM		WIDTH	SIZE DEPTH (mm)	HEIGHT	WEIGHT (kg)	CONTROL
		MIN (m³)	MAX					
STN-90-3	9,0	8	20	560	310	485	25,5	Touch / Classic / Classic 2.0
STN-90-C1/3	9,0	8	20	560	310	485	25,5	Touch / Classic / Classic 2.0
STN-120-3	12,0	15	28	560	310	485	25,5	Touch / Classic / Classic 2.0
STN-150-3	15,0	22	40	560	310	485	25,5	Touch / Classic / Classic 2.0

STN Overview

- » Replacement of STP steam generators
- » Heavy-duty commercial and residential steam generators
- » Build from stainless steel with brushed top cover
- » Wall-mounted on either side
- » Steam output up to 20 kg/hr/unit
- » Separate control panel: STN Classic 2.0, STP Classic or STP Stainless Steel Touch
- » Autodrain on the side or at the bottom
- » Square-shaped steam head (100 mm x 100 mm)
- » Overpressure valve with pipe
- » Heating elements attached to holder for easy maintenance
- » Error detection: Displays error codes
- » Remote control for automated households. (Only with Stainless Steel Touch Control)
- » Optional: Provisions for aroma pump, fan and light dimmer
- » Optional: Demand button inside steam room
- » Connection for up to 5 steam generators using 1 control
- » 3, 3,5, 4, 4,5, 5 kW (2HE) 7,6L tank capacity
- » 4,5, 6, 7,5 kW (3HE) 10,3L tank capacity
- » 9, 12, 15 kW (6HE) 17,3L tank capacity
- » 220-240V 1N~ Single Phase Connection applicable for 2HE
- » 220-240V 2N~ Two Phase Connection applicable for 2HE
- » 380-415 3N~ Three Phase Connection applicable for 3HE & 6HE
- » 230V 1N~ / 230V 3~ / 400V 3N~ Connection applicable for selected 3HE & 6HE models

STP/STN Controls



Stainless Steel Touch Control
(for steam generators)

- » Thick stainless steel casing
- » Animated buttons
- » Compatible for automated households
- » Emergency alarm provision
- » Standby mode
- » Weekly timer
- » Error code display
- » Autodrain function
- » Key lock
- » Easy mode
- » Date and time
- » Power consumption counter
- » Decalcifying function
- » Blackout memory
- » Celsius or Fahrenheit temperature unit
- » Light control
- » Fan control
- » Aroma pump control
- » LCD contrast adjustment
- » Temperature sensor with wire
- » 7,5 meters RJ12 cable with connectors
- » Control required for household automation for STP/STN
- » Wooden interface holder (optional)



Classic Control
(for steam generators)

- » Push-buttons
- » LED-display
- » Standby mode
- » Error code display
- » Manual decalcifying process
- » Autodrain function
- » Key lock
- » Light control
- » Fan control
- » Aroma pump control
- » Temperature sensor with wire
- » 7,5 meters RJ12 cable with connectors
- » Wooden interface holder (optional)



Classic 2.0 Control
(for steam generators)

- » *Same as Classic Control*

FOR RESIDENTIAL USE

Economical steam generators



STE models



STE Steam Generators

Power On. Start steam bathing.

If you like a straightforward use of steam generator, this is built for you! There is nothing wrong when just wanting to have a steam, just a steam.

The latest steam generator, STE, transpires as the easiest way to have a steam. Switch on and adjust the level of steam you like and that's it! The temperature is adjusted via the thermo knob switch for a minimum or maximum output. A lot convenient and no hassle setting up.

The STE steam generators are lite version of its predecessors. Optional functions were omitted to achieve a simpler steam operation. STEs are using own special control.





STE Overview

- » Recommended for residential use
- » Built from stainless steel
- » Wall-mounted on either side
- » Steam output up to 20 kg/hr/unit
- » Easy-to-use ECO control included
- » Manual drain
- » Square-shaped steam head
- » Overpressure valve with pipe as a safety precaution
- » Individual heating element arrangement
- » Error detection: 4 built-in LED error indicators
- » Remote control for automated households. (Only with STE Classic Control)
- » Optional: Demand button for extra steam
- » Connection for up to 5 steam generators using 1 control
- » 3, 3,5, 4, 4,5, 5 kW (2HE) 7,6L tank capacity
- » 4,5, 6, 7,5 kW (3HE) 10,3L tank capacity
- » 9, 12, 15 kW (6HE) 17,3L tank capacity
- » 220-240V 1N~ Single Phase Connection applicable for 2HE
- » 220-240V 2N~ Two Phase Connection applicable for 2HE
- » 380-415 3N~ Three Phase Connection applicable for 3HE & 6HE

Technical DATA

2 Heating Elements

HEATER MODEL	kW	STEAM ROOM		WIDTH	SIZE		WEIGHT (kg)	CONTROL
		MIN (m³)	MAX		DEPTH (mm)	HEIGHT		
STE-30-1/2	3,0		3	525	175	410	9	Eco Control / STE Advance
STE-35-1/2	3,5		3,5	525	175	410	9	Eco Control / STE Advance
STE-40-1/2	4,0		4	525	175	410	9	Eco Control / STE Advance
STE-45-1/2	4,5	2	5	525	175	410	9	Eco Control / STE Advance
STE-50-1/2	5,0	2	6	525	175	410	9	Eco Control / STE Advance

3 Heating Elements

HEATER MODEL	kW	STEAM ROOM		WIDTH	SIZE		WEIGHT (kg)	CONTROL
		MIN (m³)	MAX		DEPTH (mm)	HEIGHT		
STE-45-C1/3	4,5	2	5	525	200	410	10	Eco Control / STE Advance
STE-60-C1/3	6,0	3	10	525	200	410	10	Eco Control / STE Advance
STE-75-C1/3	7,5	4	15	525	200	410	10	Eco Control / STE Advance

6 Heating Elements

HEATER MODEL	kW	STEAM ROOM		WIDTH	SIZE		WEIGHT (kg)	CONTROL
		MIN (m³)	MAX		DEPTH (mm)	HEIGHT		
STE-90-C1/3	9,0	8	20	525	290	410	13	Eco Control / STE Advance
STE-120-3	12,0	15	28	525	290	410	13	Eco Control / STE Advance
STE-150-3	15,0	22	40	525	290	410	13	Eco Control / STE Advance

STE Controls



Eco Control for STE

- » Thick stainless steel casing
- » Illuminated power button
- » Temperature control knob
- » Temperature sensor with wire
- » 7,5 meters RJ11 cable with connectors included



STE Advance Control

- » Push buttons
- » Digital time and temperature display
- » Programmable time (session time) and temperature
- » On/Off and Pause modes (Energy saving standby mode)
- » Cabin light switch
- » Key lock
- » Remote On -feature for household automation
- » Heating element reset
- » Celsius or Fahrenheit temperature display